



**Please  
sign in  
chat box:**  
**Name**  
**Role**  
**Charter**  
**School**

**Association of Charter  
Education Services**

# ACES 101

## **Who we are...**

- ACES employees
- Location

## **How we exist...**

- Governance structure
- Financial structure

## **What we do...**

- Procurement
- Programs and Services

## **How we can help YOU...**

- Who to call
- Where you can find us





# Association of Charter School Educational Services Overview

ACES is a public entity approved by the New Mexico Department of Finance and Administration (DFA), to provide services and support to New Mexico charter schools.

ACES operates through a Joint Powers Agreement (JPA) that is approved by the New Mexico DFA. Charter schools that are members of ACES can take advantage of cooperative purchasing of goods and services.

ACES mission and purpose is to partner with charter schools so we can lower operating costs and put those savings back into classrooms.

**We are BETTER TOGETHER!**



# ACES Field Team

ACES has a small office located at 5736 Osuna Rd. NE in Albuquerque. Most of our work is completed at home, virtually or out meeting with schools and vendors.



**Christy Takacs**  
**Executive Director**  
[ed@nmaces.org](mailto:ed@nmaces.org)  
575-308-1844



**Max Luft, Co-Founder**  
**Director of Procurement and Maintenance**  
[Max.l@nmaces.org](mailto:Max.l@nmaces.org)  
505-269-2109



**Amber Le**  
**Programs and Services Manager**  
[m.a@nmaces.org](mailto:m.a@nmaces.org)

# ACES "Office" Team



**Lorrie DeLoach**  
**Accounts Receivable**  
[businessoffice@nmaces.org](mailto:businessoffice@nmaces.org)



**Nancy Bangs**  
**Accounts Payable**  
[a.p@nmaces.org](mailto:a.p@nmaces.org)



**Sharon Myers**  
**Administrative Assistant**  
[a.a@nmaces.org](mailto:a.a@nmaces.org)

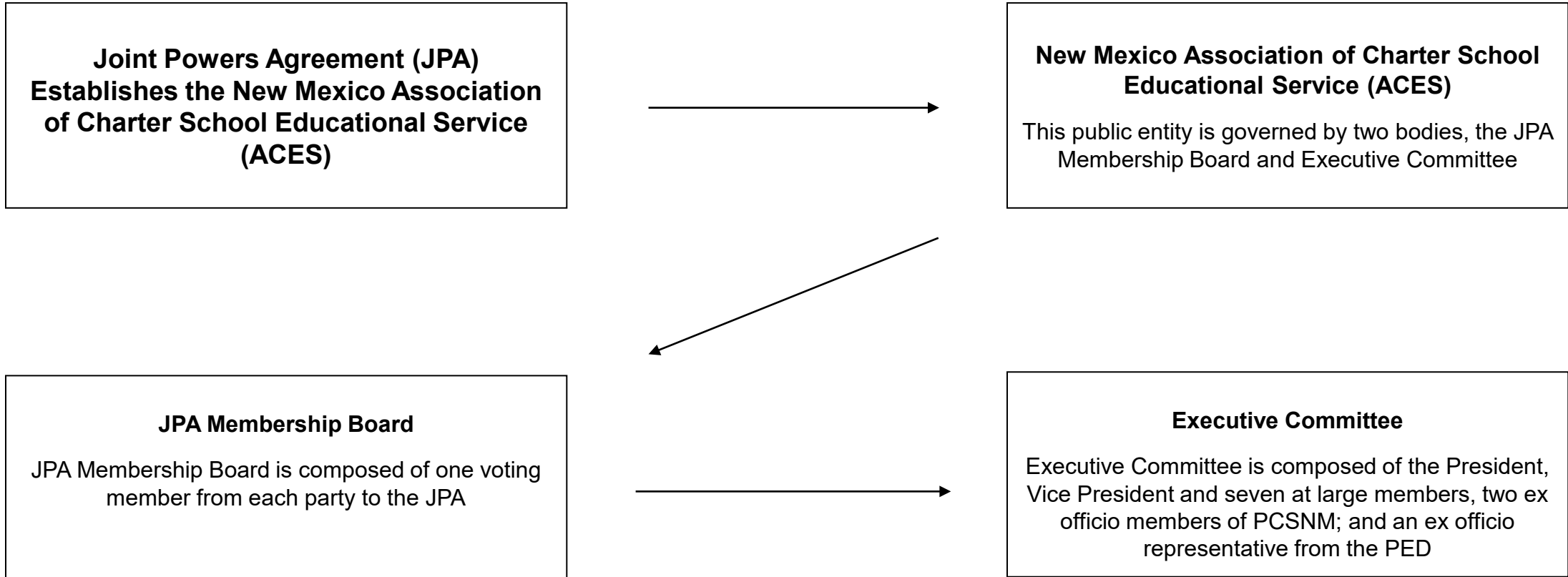
# ACES 101

## **How we exist...**

- Governance structure
- Financial structure



# Governance Structure



# JPA Membership Board

85 Member Charter Schools

- Elect President and Vice President
- Final approval of employment and termination of Executive Director
- Final approval of Board Bylaws and Policy
- Dissolution of ACES
- Meets annually

## Executive Committee

- President – Eric Ahner – J. Paul Taylor Academy
- Vice President – Casey Benavidez – Cien Aguas
- Treasurer – Mark Tolley – Corrales International
- Secretary – Kelly Callahan – PCSNM – Ex Officio
- Member – Bridget Barrett – SAMS Academy
- Member – Alexandra Boyd – The ASK Academy
- Member – Matt Pahl – PCSNM – Ex Officio

## Finance Committee

- Mark Tolley
- Erik Bose
- Michael Rodriguez
- Alexandra Boyd

## Governing Docs Committee

- Eric Ahner
- Kelly Callahan
- Susan McConnell

## Marketing/Membership Committee

- Jesus Moncada
- Casey Benavidez
- Bridget Barrett
- Matt Pahl



# Financial Structure

## Membership is Free

Most funding is generated from administrative fees imposed on goods and services purchased through ACES

Upon dissolution of the JPA and ACES, assets shall be distributed to the current members in proportion to their contributions made to ACES (Annual Shares Report)

# ACES 101

## **What we do...**

- Procurement
- Programs and Services





# ACES has a contract for that!

## Here are a few examples of our current contracts:

- Bulk Food/Cafeteria Food Service
- Landscaping and Grounds Maintenance
- Handyman Services
- Security Personnel and Products/Services
- Business Management Services
- Online Ancillary Services
- Custodial/Sanitization
- Educational/Instructional Technology
- Transportation
- HVAC

# Additional ACES Services

## Cadre Professionals

- Special Education Support and Training
- Bilingual/ELL Support and Training
- Administrator Mentorship and Support

## Employment Services

## Facility Maintenance

## Substitute Management

# ACES 101

## How we can help YOU...

- Who to call
- Where you can find us



# We want you to call us FIRST!

## How to reach us:

- Contact information (listed above)
- <https://nmaces.org/>
- <https://www.facebook.com/NMACES>



WHO YOU  
gonna  
CALL?

# Questions & Answers

